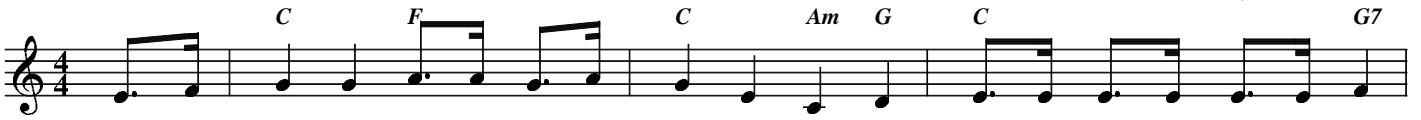


GLORY BOUND

Jerry L. Bartachek



1. JE - SUS SET OUR FEET UP - ON THE PATH - WAY THAT WILL LEAD US TO OUR HEAV - EN - LY
 2. GOD HAS GIV - EN US THE HO - LY SPIR - IT AS A LAMP TO LIGHT THE GLO - RY - LAND



HOME. IT'S A CI - TY FULL OF MAN-SIONS; GOD PRE - PARED FOR US EACH OUR OWN. JE - SUS
 WAY. WITH HIS LIGHT TO GUIDE OUR FOOT-STEPS, WE WILL NEV - ER BE LED A - STRAY. GOD HAS



PROM - ISED US IN THE BI - BLE, WE'LL LIVE WITH HIM ON HIGH, IF WE
 SEALED US WITH THE HO - LY SPIR - IT, AND SHOW - ERD US WITH LOVE, AND THE



TRUST IN THE LORD AND FOL - LOW HIS COM-MAND-MENTS, WE WILL LIVE AND NOT DIE. WE ARE
 LORD WILL RE - TURN TO QUICK - LY TAKE US TO HIS SHIN - ING MAN-SION A - BOVE.



GLO - RY BOUND TO A BEAU - TI - FUL HOME, IT'S A MAN - SION UP IN THE SKY. WE ARE



GLO - RY BOUND TO OUR HEAV - EN - LY HOME, WE WILL LIVE THERE BY AND BY. AS WE



TRAV - EL A - LONG, WE ARE LED BY THE SPIR - IT EV - EN THROUGH THE DARK - EST NIGHT. WHEN OUR



JOUR-NEY IS DONE, WE WILL NOT NEED THE SUN, FOR THE GLO - RY OF THE LORD IS OUR LIGHT.